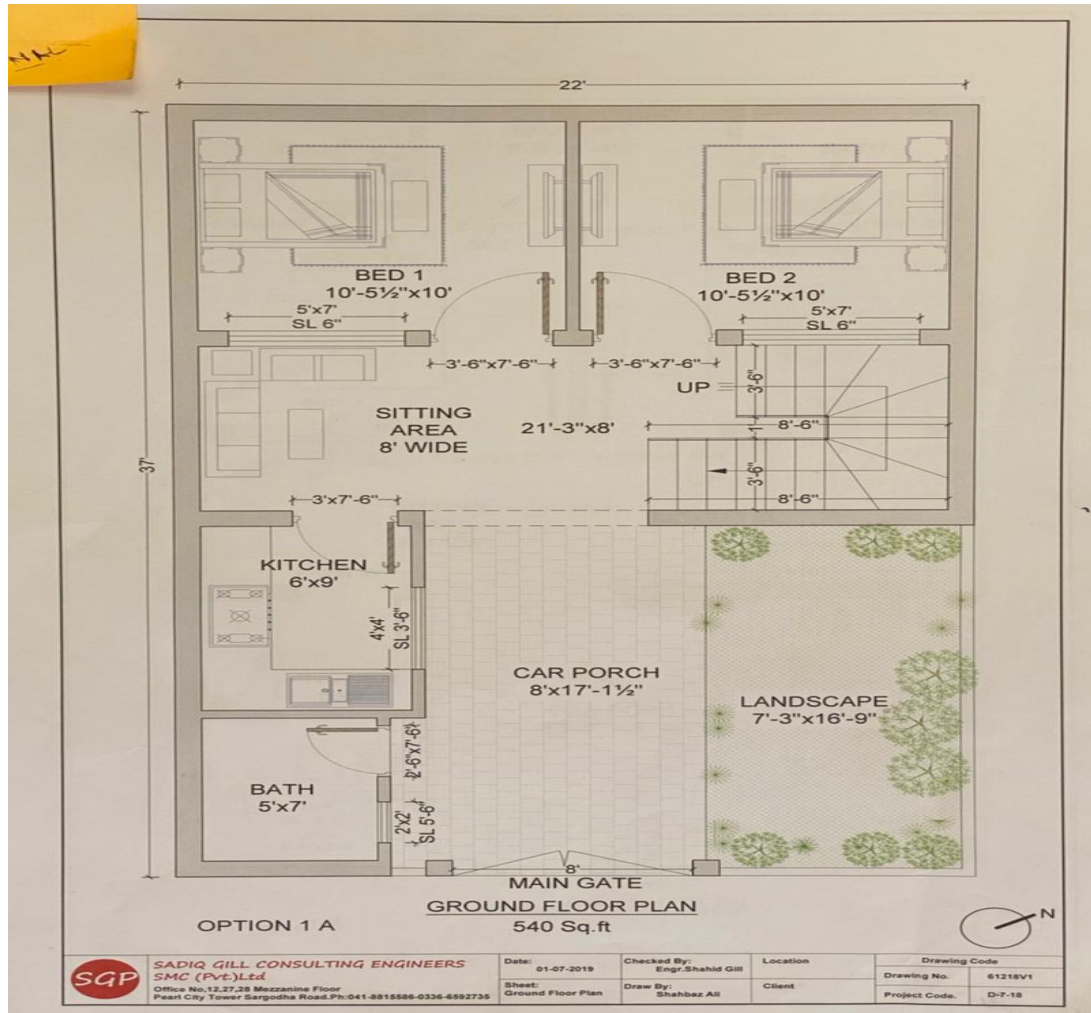


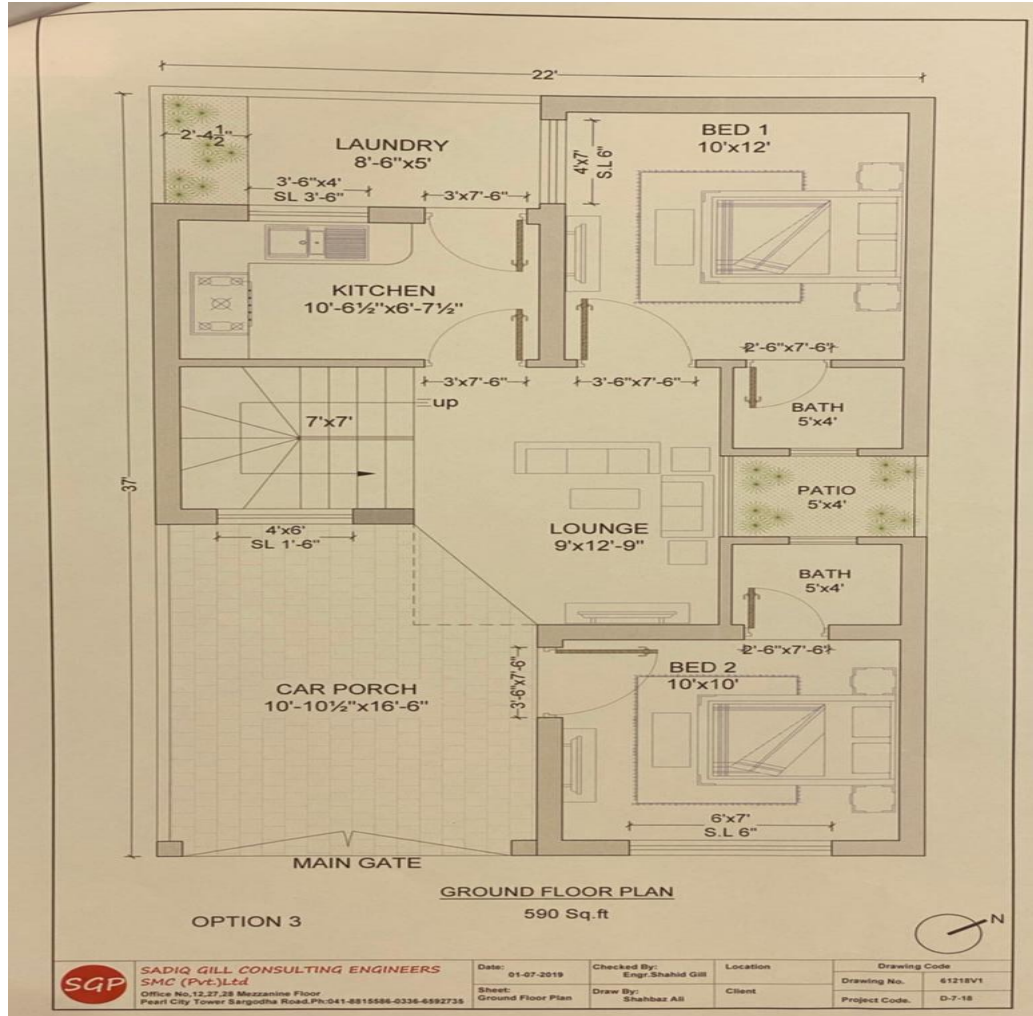
LAYOUT 1 (Both Rooms at Back)



• Advantages

- ✓ Covered Area 540 sft
- ✓ Modern look due to lounge instead of veranda
- ✓ Covered stairs with mumty
- ✓ Lawn instead of complete tough tiles
- ✓ Bath & WC can be separated

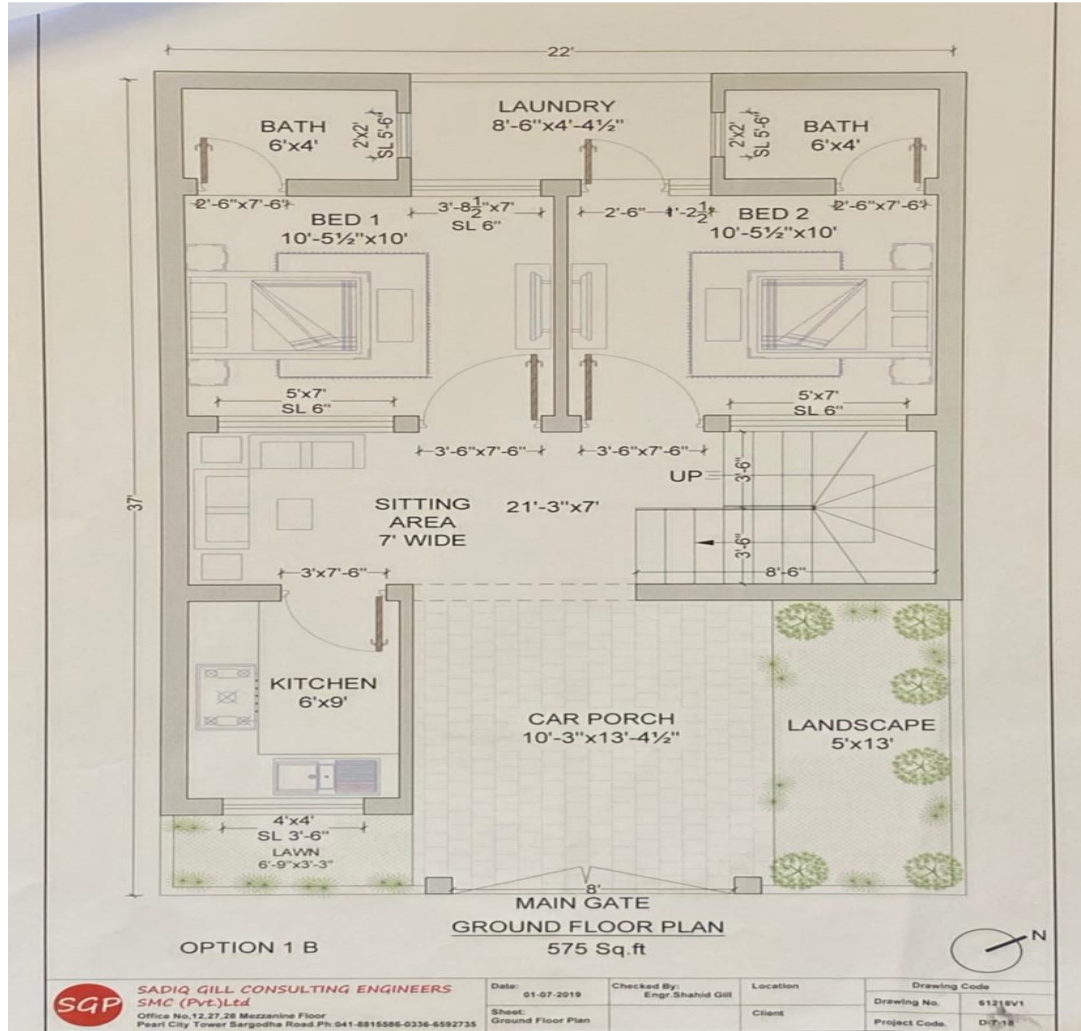
LAYOUT 2 (1 Room in front 1 at Back)



• Advantages

- ✓ Covered Area 590 sft
- ✓ Front Room as Drawing Room cum Bed Room
- ✓ Modern look due to lounge instead of veranda
- ✓ Covered stairs with mumty
- ✓ Sizes can be adjusted to bring it closer to 560 sft covered area
- ✓ Patio can be converted into store

LAYOUT 3 (Bath & Laundry at Back)



• Advantages

- ✓ Covered Area 575 sft
- ✓ Better ventilation/ airy
- ✓ Modern look due to lounge instead of veranda
- ✓ Covered stairs with mumty
- ✓ Lawn instead of complete tough tiles
- ✓ Two att baths

• Recommended

RIDER CLAUSES

- **Storage space over bath & shower rooms with two RCC levels**
- **Stairs inside veranda/ lounge**
- **Mumty over stairs**

LAYOUT (Safia Homes – 3.6 Marla)



• Advantages

- ✓ Covered Area 572 sft
 - ✓ Better ventilation/ airy
 - ✓ Modern look due to lounge instead of veranda
 - ✓ No stairs/ mumty
 - ✓ Lawn instead of complete tough tiles
 - ✓ Two att baths & store
- A better layout for ref only